

PORCELAIN

SAI 20MM PORCELAIN SERIES

SAI 2024 - 2025



[Aesthetic
Affordable
Durable]



PRODUCT INDEX



REEFSTONE CREAMY WHITE

CODE PTCW60060020TX



REEFSTONE WARM GREY

CODE PTWG60060020TX



REEFSTONE NEUTRAL GREY

CODE PTNG60060020TX



REEFSTONE DARK GREY

CODE PTDG60060020TX

SPECIFICATION DATA

SIZE 600 x 600 x 20 (mm)

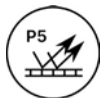
PRINT 6 Prints

SLIP RATING P5

WEIGHT 16.5 KG/PC (2 PCS/CTN)

PACKING 40 CTNS / CRATE

80 PCS / CRATE



NON-SLIPPERY



HIGH STRENGTH



CORROSION RESISTANT



HIGH RIGIDITY



LOW ABSORPTION



STEADY COST



NO RADIATION



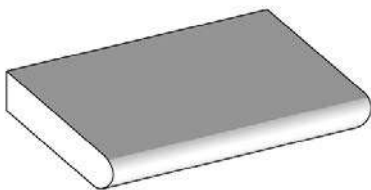
STABLE SUPPLY

CUSTOMISED EDGING

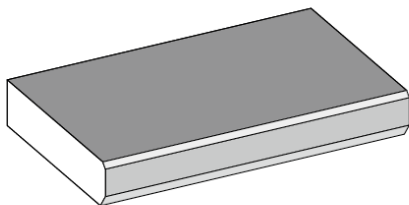
We offer variety of edge options by **local processing** in our in house warehouse, with a **fixed price** on all copers.



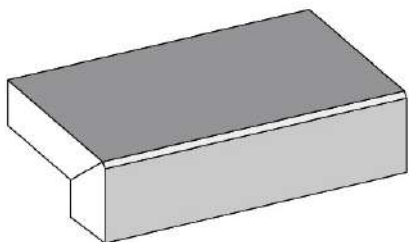
Coper Edge Profiles



Bullnose

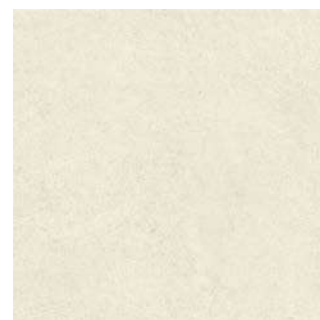


Bevelled

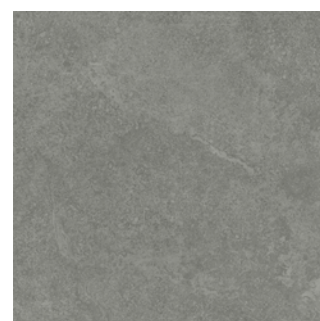


**Dropface
(Mitre Cut&Glue)**

APPLICATIONS

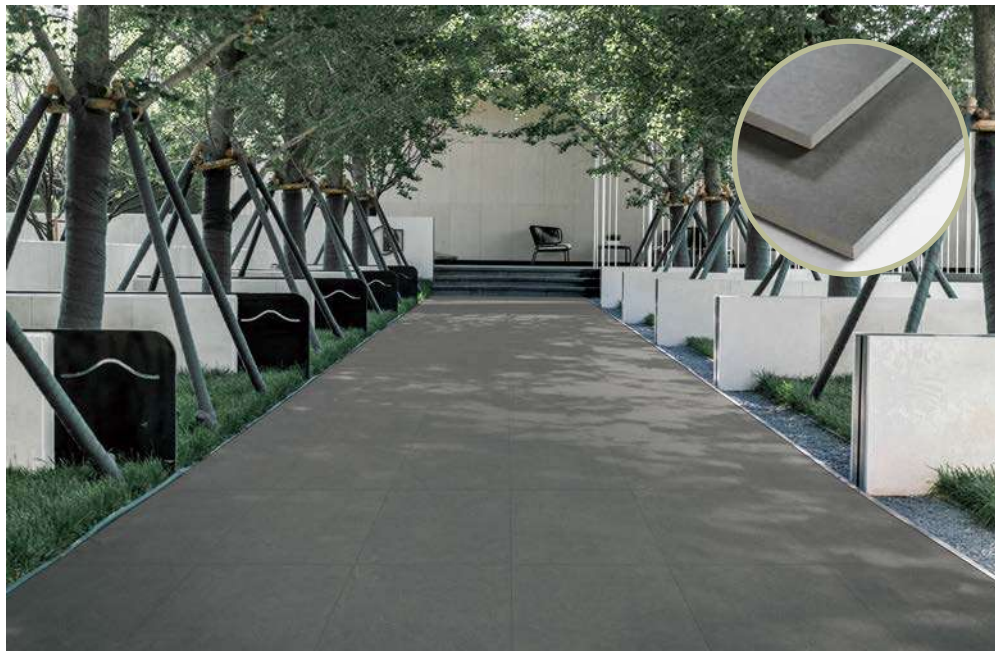


CODE PTCW60060020TX
REEFSTONE-CREAMY-WHITE

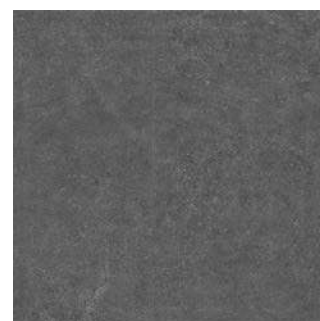


CODE PTWG60060020TX
REEFSTONE-WARM-GREY

APPLICATIONS



CODE PTNG60060020TX
REEFSTONE-NEUTRAL-GREY



CODE PTDG60060020TX
REEFSTONE-DARK-GREY



Thank you.

WAREHOUSE

5 Hamilton Street
VIC 3166 Australia

CONTACT US

1300 855 851
info@saistone.com.au